

Gyrocompass: RovFOG



Key features:

- *Very accurate heading, pitch & roll measurements*
- *Requires no recalibration & no maintenance*
- *Serial outputs for integration to survey data collection*
- *User friendly WinFOG Windows display software*
- *Analogue heading pitch and roll outputs*

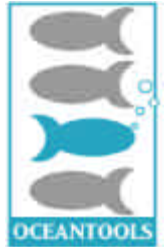
The OceanTools RovFOG is a compact and cost-effective true-north seeking gyrocompass and Attitude Heading Reference System (AHRS) utilising the very latest in Fibre Optic Gyro (FOG) technology. It is designed for direct integration into a customer's ROV or AUV system. RovFOG is not influenced by external magnetic or ferrous influences of any kind thus making it ideal for host systems that work in close proximity to pipelines, wellheads, platforms and other metalwork.

Based on three high-specification fibre optic gyros and a precision level sensor in strap-down mode, RovFOG offers superior performance to that of conventional fragile spinning mass gyrocompasses.

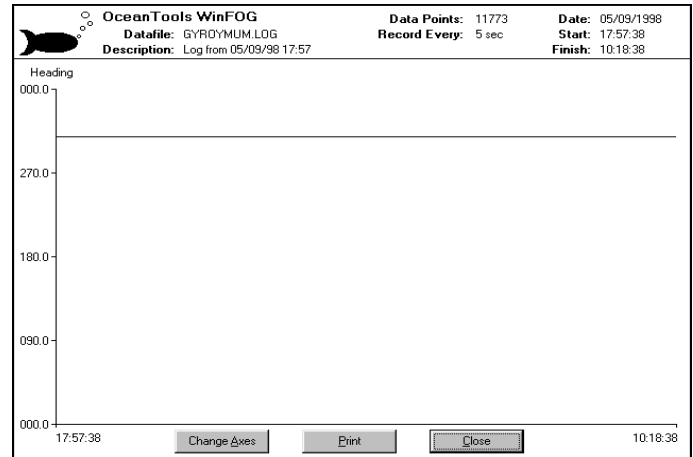
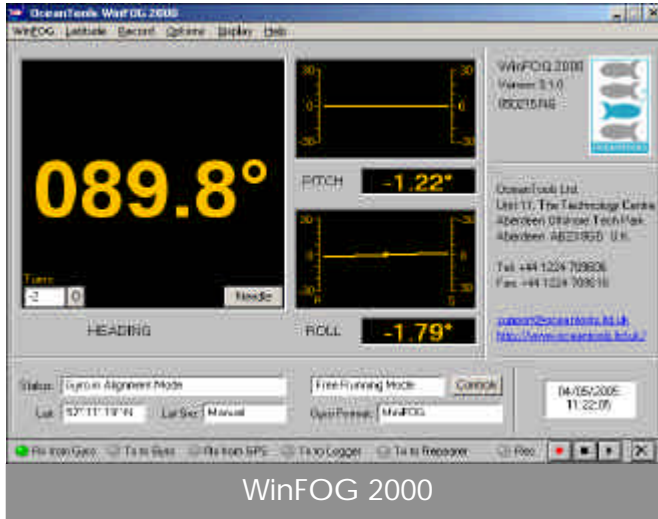
It contains no moving parts of any kind so there is nothing to go out of alignment. RovFOG is totally maintenance free and never requires recalibration.

A major advantage of FOG technology is the fast run-up times with useable data available within 5 minutes and full accuracy achieved just a few minutes later. There is no run-down time and power can simply be removed from the unit.





RovFOG: Technical information



WinFOG 2000 data-logger user interface

Heading accuracy

Typical accuracy	0.2° - 0.3° x Secant latitude
Worst case	0.7° x Secant latitude
Resolution	0.1°
Maximum latitude	75° North & South

Pitch & Roll accuracy

Typical accuracy	Better than 0.02°
Worst case	0.2°
Resolution	0.01°
Range	± 45°

Run-up time

Typical useable run-up time	3 - 5 minutes
Worst case, static	20 minutes
Worst case, dynamic	30 minutes

Dimension

Length	405 mm
Diameter	300 mm
Weight in air	10 kg

Power rating

DC supply	24 VDC @ 4 Amps max
-----------	---------------------

Environmental

Shock	9 g for 11 mSec all axes 5 - 12.5 Hz Amplitude 1.6 mm 12.5 - 25 Amplitude 0.1 mm
Vibration	25 - 50 Hz Amplitude 0.1 mm
Operating temperature	-15°C to +55°C
Storage temperature	-35°C to +73°C

Data outputs

Serial formats	- Numerous outputs formats included - RS232/RS485 up to 19200 Baud - Heading, Pitch, Roll Rate all available as ± 5 VDC
Analogue outputs	- up to 32 Hz - Heading, Pitch, Roll Rate all available as ± 5 VDC - 0 - 3.599 VDC at 12 Bit resolution